

v h 21/13/86



The
Yateley
Society

NEWSLETTER

Issue 86 June 2007

Registered Charity: 282397
Registered with the Civic Trust

Yateley Society Summer Social

Saturday July 9th, 7pm – 10 pm
Red Cross Centre, Monteagle Lane

!! GET TO KNOW OTHER MEMBERS !!



There will be a buffet meal - the main course will be provided, but the sweet course will be left to you, the visitors to bring! - past experience shows that an amazing array of delicacies will appear.

Please bring your own drinks along.

If you cannot provide a sweet - please do not be put off, perhaps you could donate a raffle prize instead, or just come along without!

If you are exceptionally generous and can bring both a sweet and a prize, please feel free!
There will be friendly chat, and there is always the chance that someone will produce a devilish puzzle to keep the brain cells busy!

All members, their families and prospective members are welcome.

Tickets £5.00 Adults, £3.00 under 14's

(Children must be accompanied by a responsible adult)

If you would like to come, please let Trudy Boothby, trudyb@rya-online.net, 01252 409262 or Jo Hill, jo.hill.45@ntlworld.com (01252 640909) know, NOW!
(advance notice is essential to ensure that there is adequate food).



Jacqui studied fragments brought to the meeting

Pipkins, Porringers and Platters.....

...amongst other items were shown to us in the May talk by Jacqui Pearce of the Museum of London when she gave an excellent talk about Borderware Pottery and its importance to this area.

There has been so much interest in this subject, that we are serialising Jacqui's lecture in this newsletter, transcribed by Richard Johnston.

(see inside)

Darby Green Pond

The Hampshire Wildlife Trust recently carried out a survey of the current state of Darby Green Pond. The survey advises retaining the sloping bank and buffer of vegetation between the water and path to protect wildlife and recommends effort to battle the non native weed species, Parrots Feather, Water Fern and Pygmyweed which the council are constantly battling to keep at bay!



Darby Green Pond under siege from three invaders:



Parrot's Feather



Water Fern



Pygmyweed



Our June talk was an archaeological update by Carol White who is using Yateley Common as a case study for part of her PhD at Winchester University.

During the Mesolithic period, people lived in family groups and survived by hunting, fishing and gathering nuts, fruits, berries and shell fish. They moved over large areas, between coasts, rivers and forests as the seasons changed and favoured different food sources and shelters are therefore likely to have been temporary structures of wood and skins. Yateley Common is one of the largest sites in southern England for archaeological finds from this period, including evidence of crafted flint arrow heads, which tell us about the comings and goings of the hunter gatherers of the time.

This year, Carol is organising another archaeological investigation, (from Saturday 11th to Sunday 26th August 2007), involving the examination of an area recently detected from surface surveillance exercises and referred to as the 'Burnt Ridge', now regarded as of potential archaeological importance. Field activities at this location will involve test-pit excavations, processing finds and environmental evidence and further surveillance exercises. If you would like to be considered for the field activities this year, please email Carol on carolwhite1arch@aol.com.



Borderware Pottery – serialisation of Jacqui Pearce's (University of London) lecture for the Yateley Society - part one

Felix Holling excavated at Farnborough Hill Convent between 1968 and 1972. A book on Surrey-Hampshire Border ware was published in 1992. Jacqui Pearce has been working on a new book in cooperation with Guildford Museum since 2003, and the book will be published in 2007. At Farnborough Hill four kilns were discovered, together with large quantities of wasters: this site dates from the late C14 to C15. All Surrey whiteware and Border ware is wheel thrown, and is unmarked. (Potters formed a lowly craft without Guilds, in contrast to clay pipe makers, who earlier used stamps on their pipes but moulds in the C18 and C19.)

Surrey whiteware is buff coloured, the white distinguishing it from redware (characteristic of London pottery) which is red/brown brick coloured. The colour depends on the nature of the clay used. Whiteware was made at Kingston, Cheam and Farnborough. Interest in pale body pottery arose in the C12 with the import of high quality white pottery from the Rouen area of Northern France. Thus whiteware became associated with high quality, and hence became a status symbol, because it was not local.

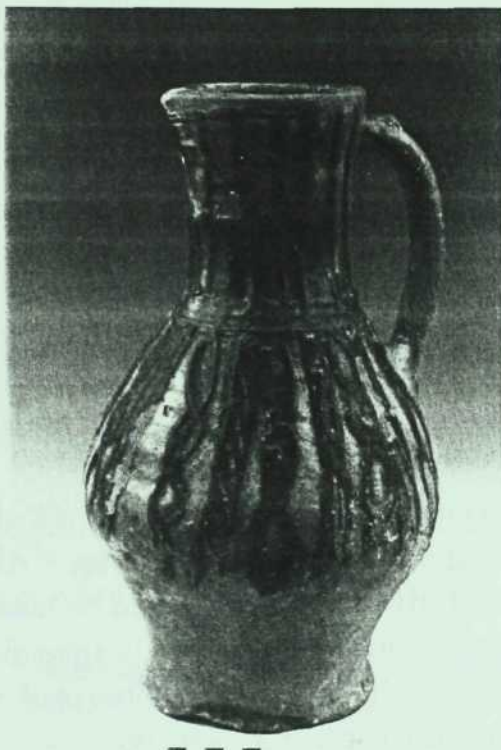
White-firing clay is found in Surrey in Farnham Park and at Tongham. Combined with a green

lead glaze (coloured with copper) and the use of coloured slips (i.e. thinned clays applied by pouring over the body), it creates beautiful items. Pottery industries therefore grew up, so that it was no longer necessary to import such wares from France. London was the main market. Kingston upon Thames was the first pottery to send its wares into London starting

about 1240 (dendrochronological dating for large waterfront contexts), producing a wide range of pot forms, and this was the starting point for the Surrey whiteware tradition. Jugs (with a handle) were the mainstay product, and might be ornate, as in a jug depicting a man with his hands to his beard. Cooking vessels, storage jars and jugs predominate. At Kingston a good representation of the products and the kilns has been found. Different glaze colours were used, and in the mid C13 the pots were very decorative, with much effort expended on decoration, showing these to be status items intended for display.

For example, decoration included large numbers of carefully applied pellets of clay, a time consuming

process. It was therefore a high quality industry, and designs were sometimes made in imitation of corresponding vessels made from other materials, such as metal, in the case of cooking pots. Pots provided a cheaper alternative to metal cooking vessels.



0300000

Join the online panel and help improve services

To find out what people in the district think of Hart Council and enable them to contribute to feedback about its services, they are launching an on-line panel.



To join the panel you must be a Hart resident aged 16 or over and have an email address which they can use to contact you. More than one person per household may join, as long as each has a unique email address.

If you would like to be a member of the Hart Citizens Panel, please register your details using their online form.

www.hart.gov.uk/index/customer_services/consultation-at-hart.htm

New Venue for our
Monthly Meetings!
The newly refurbished
"Tythings"

PROGRAMME OF EVENTS – 2007

Our meetings are held on the 3rd Thursday of the month at **The Tythings, Reading Road, Yateley**, 8.00 pm start unless otherwise stated.

All events are open to non-members and there is no admission charge.

Saturday 7 July 2007 7pm - 10pm	Yateley Society Summer Social Relax and enjoy the company, the food and, of course, the quiz! <i>At the Red Cross headquarters, Monteagle Lane, Yateley</i>
Thursday 19 July 2007	Yateley's Fire Stations - Colin Ive Regaling us with excerpts from his recently completed book, about many of the people and situations he met during his 25 years as Officer in Charge of Yateley Firestation.
Friday 24 August 2007	Going Batty! Join the Ranger and local bat expert Paul Hope to learn about these fascinating nocturnal mammals. Then use the bat detector to find the bats flying around Yateley Common. Insect repellent and torch recommended. Meet at Wyndhams Pool car park (off Cricket Hill) at 8.15pm
Thursday 20 September 2007	Loddon and Eversley Heritage Group - Alison Cross This joint initiative was established to meet the challenge of protecting and enhancing all that is special about the area whilst promoting a healthy and sustainable rural economy. http://www.loddon-eversley.org.uk/
Thursday 18 October 2007	Tba
Thursday 15 November 2007	Hampshire Playing Fields Association Having helped to provide and protect sport and children's play areas in Hampshire for over 75 years, find out about their recent projects in Yateley.
Thursday 13 December 2007 (note 2 nd Thursday)	Yateley Memorabilia For this festive meeting, members are asked to bring along interesting items from old Yateley for discussion.

o o o o

The Conservation Working Party:

We normally meet at Wyndhams Pool, Cricket Hill at 10.00 am on the last Sunday of every month. Everyone is welcome to join in the fun! In April the group cleared paths in the east end of the Common and in pouring rain in May, cleared willows blocking the views of Stroods Pool. The aim is to help the Yateley Rangers in all sorts of tasks in the upkeep of Yateley Common. To find out more, please call Mike Mann on 01252 877741.

Editor - Jo Hill, tel: (01252) 640909, email jo.hill.45@ntlworld.com
Yateley Society website: www.yateleysociety.org.uk