



The Yateley Society

NEWSLETTER

Issue 73 February 2005

Friday March 4th

THE CHAIRMAN'S DINNER at the Chequers Pub, Eversley 7.15pm for 7:30 pm

If you would like a lift on the night, let us know.
Likewise, if you are able to give someone a
lift...

Come along for a social evening and pay your
own way so that you can decide how much
you spend (and eat)!

Booking beforehand is ESSENTIAL

Numbers will be limited to 30 to keep things
informal and manageable

Please book by Friday Feb 25th.

Ring Tony & Mary Hocking on (01252) 875158
at 27 Hall Farm Crescent, Yateley, GU46 6HT
or email jo.hill.45@ntlworld.com to book.

Thursday February 17th

THE YATELEY SOCIETY ANNUAL GENERAL MEETING 8pm at Yateley Infants School Hall, Cranford Park Drive, Yateley

With this Stop Press, you should receive a copy
of the Annual Report, together with notices of
resolutions to be discussed at the AGM.

*These resolutions are topical and relevant to
what is going on in Yateley – the outcome of
the discussions and vote will be recorded as the
formal position of the Yateley Society.*

Please submit any Executive Committee
nominations to Richard Johnston.

**This is the most important meeting of the
year and we must have a quorum.**

**Come along, have a glass of wine and
exercise your Member's right to vote.**



The Plough Monday Mummers Play

The Playmakers Dramatic Society from Mytchett
performed a Mummers Play for us at our Christmas Social.

We were treated to the Recruiting Sergeants version of the
Plough Monday Play (aka the Plough Play) which stems
from Plumtree in Nottinghamshire.

The Playmakers are interested in reproducing Mummers
plays from around the country. Manager Scoby, says
"Mummers characters are traditionally handed down from
father to son. We wanted to see how actors could inject
more drama and interest into the performances."

Well Scoby – it certainly worked well this time!

TOWN AND COUNTRY PLANNING ISSUES




Application updates:

Land East of Sandhurst Road – the application for this sports hall, golf driving range, fishing lake, and car park has already been granted approval. However, the time limit for commencement of development is now running out. Primaplus Ltd have asked for an extension to the planning approval. The Society has objected on the grounds that planning circumstances have changed since the original application was granted, so the Council should re-evaluate the application considering the updated government planning policies.

Clarks Farm, Reading Road – The application for housing, live/work units and a community building, together with a new roundabout on the Reading Road was refused. There will now be another Public Inquiry – probably in conjunction with the Public Inquiry regarding the refusal for a business park on the same site.

Woodhayes – The refusal of 14 x 2-bedroom flats on the site of Woodhayes, Firgrove Road has been appealed against.

Should you wish to make comment on this, the deadline for replies to the Planning Inspectorate is 9 March 2005. Remember to send 2 copies!

 Write to The Planning Inspectorate, 3/07 Kite Wing, Temple Quay House, 2 The Square, Temple Quay, Bristol BS1 6PN quoting Planning Application Ref: 04/01616/MAJOR and Appeal Ref: APP/N1730/A/ 05/1172287



Useful weblinks



Don't forget you can access all Hart's planning applications, together with their documentation and even residents comments on the website.

You can also make your comments to the Council online.

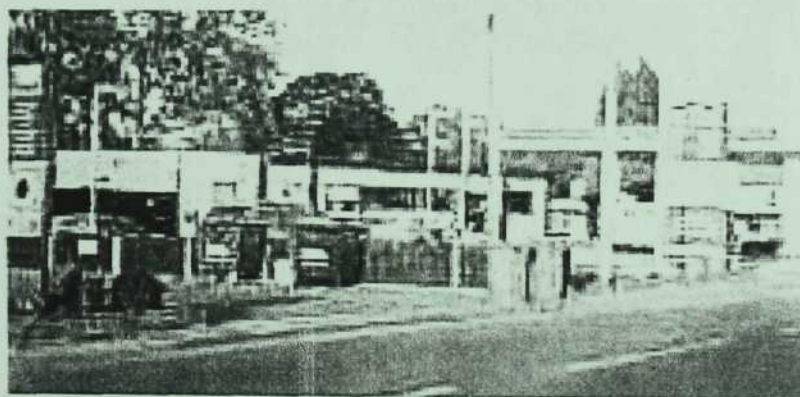
<http://www.hart.gov.uk/planning/>

"Streets For All"

English Heritage is currently producing regional guidance booklets "Streets For All" which it will be sending to all highways staff in local authorities. A lot of information is available from their website (see details on the next page), but if you have any difficulty accessing it, eg no computer! call me, Jo Hill on 01252 640909 and I will get a hard copy for you.

Do these photographs tug at the heart strings at all? We will be discussing this issue at the AGM – if you are interested, please come along and be heard.

"Streets are the foreground of our buildings and the backdrop to everyday lives. Yet England's streets are increasingly cluttered with a proliferation of traffic signs, bins, bollards, guard rails and street furniture. This results in streetscapes that are both unsightly and lack character. Co-ordinated action is needed to reverse this decline."





"Nothing says more, nor more immediately, of how a nation feels about itself, than the way it dresses its streets. England's streets are very important to how it is perceived by the world.

For people like me, parachuted in from abroad, the way a nation presents its streets is the first thing they notice. This is a country thoughtful enough to remind people to look left and right before stepping off the kerb, and stylish

enough to produce iconic pieces of street furniture such as red telephone and letter boxes. It is incumbent upon England to show world leadership in civilised streets "

Bill Bryson, English Heritage Commissioner, October 2004



Useful weblinks



Go to the English Heritage website and select "Public Policy", then "Save Our Streets". Here you can find out about the project and even download a Street Audit form to complete and send to your local councillor.

[http:// www.english-heritage.org.uk](http://www.english-heritage.org.uk)



The Conservation Working Party:

We would like to draw your attention to one of the world's rarest habitats, namely Lowland Heath, and in particular British Lowland Heath, and in particular the Lowland Heath of Yateley Common. Traditionally grazed by sheep, horses, cattle and so on, this artificially created habitat supports a number of rare and threatened species which are dependent on heathland for their survival. We support conservation efforts to re-establish heathland previously destroyed, and re-introduce grazing wherever possible. Where grazing is not possible, we encourage like-minded people to turn out and help with practical management tasks to conserve the habitat until such time as longer term management strategies (such as grazing) can be brought to bear.

We normally meet at Wyndhams Pool, Cricket Hill at 10.00 am on the last Sunday of every month. Everyone is welcome to join in the fun! The aim is to help the Yateley Rangers in all sorts of tasks in the upkeep of Yateley Common. To find out more, please call Mike Mann on 01252 877741.

Each year we like to recognise our helpers and this years winners of Certificates for Volunteer Contributions & Outstanding Contributions were:

Stella Andrews	25 hrs
Bruce Norman	30 hrs
Keith Winkworth	40 hrs
Graham Brown	50 hrs
Paul Sanders	60 hrs
Will Tabner	100 hrs
Frank Rose	300 hrs
Mary Hocking	325 hrs

and Students on Department of Education Awards:

Shivraj Sillett	12 hrs
Anthony Calfoun	20 hrs
Ben White	25 hrs
Philip Slade	20 hrs

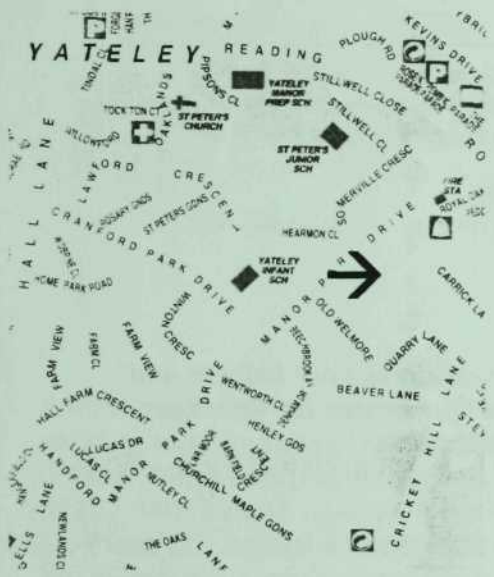
A huge thanks to all!

PROGRAMME OF EVENTS - 2005

OUR MEETINGS ARE NOW HELD AT YATELEY INFANT SCHOOL HALL Generally on the 3rd Thursday of the month, 8.00 pm Start. (Entrance to Car Park and Reception from Cranford Park Drive)

Thursday 17 February 2005	AGM This is the most important meeting of the year and we must have a quorum. Come along, have a glass of wine and exercise your Member's right to vote.
Saturday 5 March 2005	Royal Oak Valley - Volunteer Day Organised by Yateley Ranger, Elliott Fairs - more details to follow
Thursday 17 March 2005	Basingstoke Canal - the History, Wildlife and Conservation
Thursday 21 April 2005	Valda Hudson - presents a guide for the amateur genealogist
May	Yateley History Exhibition and Library Lecture - The Haven
Thursday 16 June 2005	Carol White - gives us another update on the archaeological exploits on Yateley Common
Thursday 21 July 2005	Visit to St Mary's, Hartley Wintney

Programme as 1 December 2004



Our new venue for monthly meetings, which generally take place on the 3rd Thursday of each month, 8pm start:

Yateley Infant School hall
Cranford Park Drive
Yateley

Our AGM is on 17th February. If you would like to nominate yourself or someone else to the Executive Committee, please let me know on jo.hill.45@ntlworld.com, or (01252) 640909. All posts are up for re-election.

The Executive Committee (as elected at the AGM each February) meets every 6 weeks and this newsletter is published as a result of the reports produced for those meetings. The items mentioned here are not exhaustive, just indicative of latest projects and developments. If you have any specific questions, input or desire to pursue any of these issues, please contact me or any other member of the Executive Committee. This is also an appeal if you would like meeting reminders to be sent to you by email, please drop me an email with your address (updated if you've change it!) and I'll add you to my list.

Jo Hill, tel: (01252) 640909, email jo.hill.45@ntlworld.com
Yateley Society website: www.hants.org.uk/yateley/