

The Yateley Society



Newsletter

IN THIS ISSUE

May Fayre Appeal

An Admiral on Valentine's Day

Commoners' Corner

More of Mr Gadd

No 69

Free to Members

April 1998

£1 to Non-Members

THE YATELEY SOCIETY

Newsletter No 69 April 1998

Editor: Tony Hocking, 30 Connaught Close, Yateley GU46 6QQ (01252) 875158

THE EDITORIAL

Dear Member,

As YOU SHOULD be aware, the Society Annual General Meeting was held on Thursday 26 February.

You have already received the 1997 Annual Report, and this was formally accepted without query or comment. The Treasurer's Report, in which Peter Tipton was able to announce a healthier financial position than for the previous year was also accepted, with a minimum of additional explanation.

One of the most important functions of the AGM is to elect the Officers and Members of the Executive Committee. The new incumbents are as follows.

Officers:

Chairman – Tony Hocking (new position, was Vice Chairman in 1997).

Vice Chairman – Roger Coombes (new election).

Hon. Secretary – Richard Johnston (re-elected).

Hon Treasurer – Peter Tipton (re-elected).

Executive Committee:

Graham Brown (re-elected, continuing as Membership Secretary).

Norma Dowling (re-elected).

Ken Crick (new election).

Philip Todd (re-elected).

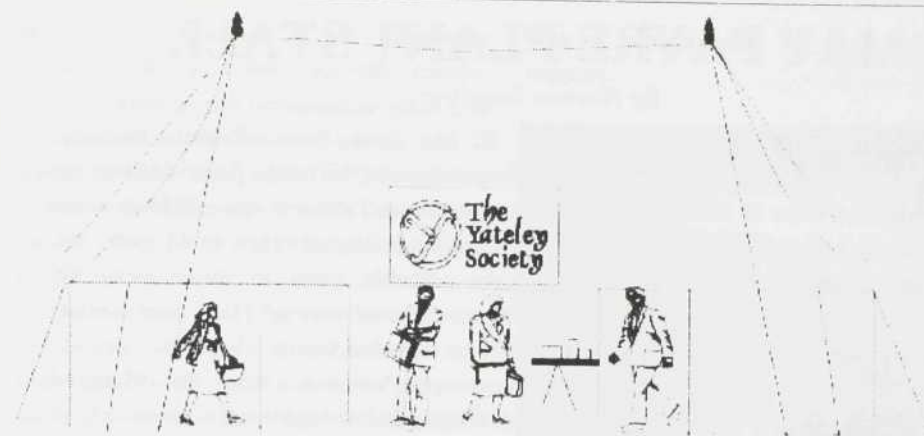
David Ashworth (re-elected).

Another important function of the AGM is to discuss and vote on resolutions. This part of the proceedings can be lively, or amusing, or tedious, or incomprehensible or all four! However, there is a serious purpose behind all this. The resolutions that are passed form the policy of the Yateley Society. Once a particular topic or item has been voted on and approved by the membership it can be justifiably claimed to represent the view of the Society and not just to represent the view of the person quoting it.

This is extremely important when evidence is being given at Planning Inquiries and in similar circumstances. To have documented proof that a Society of 200+ members agrees with what is said has been shown to have a far greater impact than a lone personal opinion.

I have quoted the five resolutions passed this February in an article in this issue of the *Newsletter*.

I have decided that each issue of the *Newsletter* should include an article from the Chairman – however this causes me some confusion over what to include in it, so if you find that there is no obvious difference in style or content between the 'Editorial' and 'Chairman's Chat' then I am entirely to blame!



HELP! MAY FAYRE

(Monday 4 May 1998)

WE NEED:

Volunteers to help erect the marquee at about 8.15am, and to help dismantle it at 5pm.

There will be a sales stall, and we ask for your valuable assistance in providing sales items:

Preserves, Biscuits, Cakes, Plants, and Knick-knacks in good condition. Please wrap all edibles (to comply with hygiene regulations). Given the above

we also need staff to run the stall. Will volunteers please contact Tony or Mary Hocking on 875158 (30 Connaught Close, Yateley). (Items for sale should be brought to Stephanie Pattenden at 26 Home Park Road, Yateley (road off Hall Lane, opposite Yateley Hall) on the evening only of Saturday 2 May or during Sunday 3 May for pricing.)

Now read Norma Dowling's article on Plants for the May Fayre Stall!

CONTENTS

Editorial	2
May Fayre	3
May Fayre Plant Stall	4
Chairman's Chat	4
AGM Resolutions	5
An Admiral on Valentine's Day	7
Commoners' Corner	9
Publications Case	11
A Circulating Library	11
More of Mr Gadd	11
Hart District Plan	13
Programme	14

MAY FAYRE PLANT STALL

by Norma Dowling

EACH YEAR, AT the May Fayre, we have a good display of plants for sale given by members who dig and delve in their gardens for us. This, along with cakes, bakes and preserves, helps to cover our costs and add a bit to funds.

This year, as one of our guests, we hope to have in the marquee with us a representative of Butterfly Conservation, which has nominated 1998 as 'The Year of Butterflies and Gardens'. We thought it might add to the interest if we themed our plants. Looking at the list of the top 200 nectar plants we feel sure many of you will have a number of these in your garden. Why not share them and help attract more butterflies to Yateley gardens?

Do you have any self sown Buddleias? Don't throw them out – pot them up! Buddleia is the favourite nectar supply for many butterflies. Lavender is second favourite. Have you a spare cutting? Can you split up clumps of Michaelmas Daisy, Ice Plant, Marjoram or Red Valerian? (It was on this latter that I saw Humming-bird Hawkmoth and Silver Y moths the other year.) These are all good suppliers of nectar.

If you have Sweet Rocket, Honesty, Forget-me-nots, Teasel, Tree Mallow or Lemon Balm I'm sure you will have some self-sown seedlings that you could spare; you were probably going to throw away the Forget-me-nots anyway! Have your Coton-easters provided young plants that you do not require? I notice that Pot Marigold seedlings are just beginning to germinate in the patch where I grew them last year. I should have some to spare. As well as helping butterflies they may deter tomato pests. If you are you sowing Candytuft, Lobelia, French Marigold or African Marigolds please spare a few seedlings. Why not take a stroll round your garden and see what you can find? You might be surprised. I caught a little white violet that seeded last year without me noticing the flowers.

I am sure many of you take as much pleasure from watching the butterflies in the garden as I do. Let's increase our pleasure! But don't worry if you do not have any of the above plants to share, come and buy instead!

Other garden plants and house plants will still be welcome on the stall.

CHAIRMAN'S CHAT

by Tony Hocking

FIRSTLY, A THANK you – to all those who attended the AGM, voted in the new Officers and Executive Committee, and who voted on our resolutions. It was a valuable and essential service to the Society.

As often happens, there was no contest and no opposition when it came to electing

the new Chairman, so here I am. I suspect that the Society will carry on with little obvious change, but time will tell.

We were very sorry to lose David Lister as Chairman – he had many good ideas during his term in office, and was responsible for two very important projects. Firstly he

guided the restoration of the Simmonds Graves marker to a very successful conclusion; secondly he put considerable effort into the attempt to renovate and use the old St Barnabas' church, a project sadly brought to a stop by the disastrous fire. We thank David for his efforts, and wish him all the best in the future.

The two new faces on the Executive are particularly welcome; an infusion of new ideas and new points of view never does any harm to any committee! Roger Coombes has some good ideas on publications which he aired at the publications meeting last year and we hope to make use of these; and Ken Crick has a strong interest in natural history, witness his excellent talk on dragonflies in December last year. At the same time those people who have been re-elected will ensure that there is a degree of continuity, which is also a good thing.

Finally, our very grateful thanks to Irene Draper for her years of service on the Executive, and her support to many aspects of the Society; we wish her well.

As usual the Society will be represented at the Yateley May Fayre with the customary marquee. Did you know that we have been present at every May Fayre from 1981 onwards? The illustration shows that first 'display' (doesn't time fly – our son, who was collecting the money, is 30 now!) I am keen to maintain our involvement as long as we continue to benefit from being on show. As

ever – success relies on your help and support.



We are particularly keen to increase the amount of goods for sale – some lines, especially food items, tend to run out around lunch time and some extra input for the early afternoon would be most welcome.

This year there is to be a departure from tradition in that we will not just have one large exhibition of our own, but will invite other organisations to have displays while we content ourselves with a smaller exhibition with a display of photographs, documents and so on, showing what we need to gather for research and publications purposes.

The reason for this change is that much of our effort is being diverted into publications at the moment; an equally good method of publicising our work and our aspirations for Yateley, and possibly less ephemeral!

Needless to say we will still have our sales stall in operation, and that is mentioned elsewhere in this Newsletter.

1998 AGM RESOLUTIONS

THE FOLLOWING FIVE resolutions were passed at the 1998 AGM on Thursday 26 February.

Incorporated in formal Yateley Society letters containing some background information, these resolutions will be copied to those public bodies and organisations which, we hope, will take appropriate action

as a result, or which will find them useful as an expression of public opinion on the topics raised.

1. The site of the old St Barnabas' Church

'This Annual General Meeting of the Yateley Society very greatly regrets that as a result of vandalism it has become necessary to demolish the old St Barnabas' church, in spite of this Society's efforts to conserve it and find it a future; regrets the failure of the building's owners to act to save it; reminds the local authorities that the site was originally granted by the Yateley Commoners for the sole purpose of building a church; and calls upon the Local Planning Authority to resist any proposal for the redevelopment of the site, this Society believing that the site should now revert to common land and become once again a proper part of the Green at Darby Green.'

Proposed by Elizabeth Tipton; seconded by Valerie Kerslake; carried unanimously.

To be sent to: Hart District Council, Yateley Town Council, Hampshire County Council, Winchester Diocese.

2. Yateley Green

'This Annual General Meeting of the Yateley Society deplores the progressive urbanisation of Yateley Green Conservation Area, which has resulted in it now being referred to as "The Recreation Ground" or "The Park"; calls upon Yateley Town Council to desist from further urbanisation of the Green; and calls upon Hart District Council to enforce planning laws within the conservation areas, without favour to any person or body which violates them, and to consider enforcement action before granting retrospective planning applications to regularise abuses.'

Proposed by Norma Dowling; seconded by Valerie Kerslake; carried unanimously.

To be sent to: Hart District Council, Yateley Town Council.

3. Housing Policy

'This Annual General Meeting of the Yateley Society welcomes the Government decision to abandon "predict and provide" planning of the housing supply; calls upon the Government to abandon the requirement for a "5-year land supply" as reflecting the same outmoded post-war philosophy; calls for a change to national policy from the provision of HOUSES to the provision of ACCOMMODATION by exploring, particularly on urban "brown field sites", new concepts for multiple occupancy and shared accommodation, with a view to providing a better social environment for the predicted increase in single persons of all ages and levels of income, and reducing the acreage demanded for housing land.'

Proposed by Peter Tipton; seconded by Roger Coombes; carried unanimously.

To be sent to: The Department of the Environment, Hart District Council, Hampshire County Council.

4. Planning by Stealth

'This Annual General Meeting of the Yateley Society deplores the manner in which site use can escalate over a period to a level which would not have been granted permission as a whole, by means of a series incremental small planning permissions, or by means of retrospective applications, or by lawful use certificates for established illegal activities; considers that especially in the case of unneighbourly activity, or where sites lie in environmentally sensitive areas, all applications to intensify development on such sites should be treated as de novo applications relative to the level of development in the surrounding area, and not to the current level of development of the site itself. The Society calls for the abolition of lawful use certificates as contrary to sound planning process.'

Proposed by Richard Johnston; seconded by Graham Brown; carried unanimously.

To be sent to: The Department of the Environment, Hart District Council, Hampshire County Council.

5. Yateley Country Park Management

'This Annual General Meeting of The Yateley Society congratulates the Hampshire County Council Site Manager and Rangers on the improvements made to all parts of Yateley Common, and in particular on the progress achieved in restoring the Lowland Heath habitat. In addition, The Yateley Society confirms its continued support for these endeavours.'

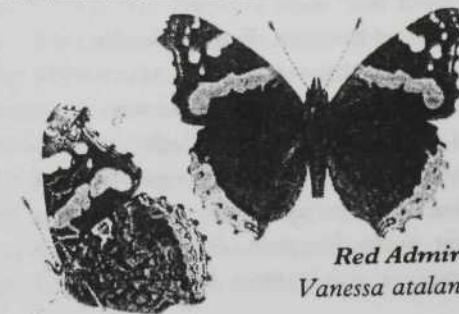
Proposed by: Tony Hocking; seconded by Mike Mann; carried unanimously.

To be sent to: Hampshire County Council, Yateley Common Rangers, Yateley Town Council.

AN ADMIRAL ON VALENTINE'S DAY

A BLACKBIRD was found nesting in a Norfolk Christmas tree, so I suppose I should not have been surprised to see a handsome Red Admiral sunning itself on our Viburnum on 14 February. But it was unexpected.

Checking with more knowledgeable friends I learned that such things are happening now. Red Admirals used to be



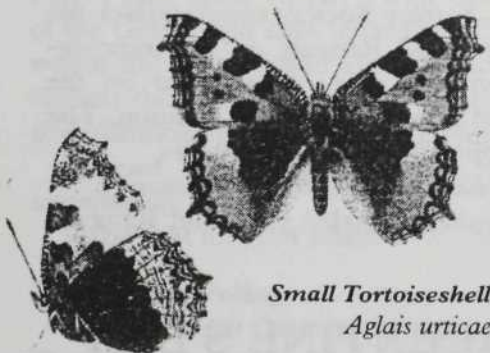
*Red Admiral
Vanessa atalanta*



Peacock
Inachis io

thought of as summer visitors from Southern Europe but they are now over-wintering with us. A warm, still day had enticed it out of its winter quarters and a nectar-rich shrub was just what was required to provide an energy source after a winter sleep.

Less unexpected on this particular weekend were two Small Tortoiseshells and a Brimstone. These do usually hibernate and delight us by appearing on the first garden-



Small Tortoiseshell
Aglais urticae

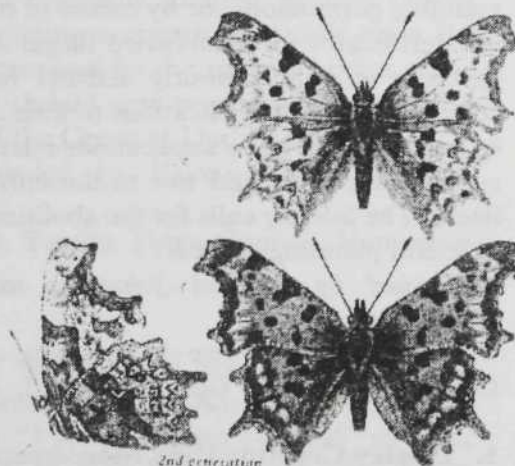
ing days of the year. But on checking my records even they were early: 2 March 1994 was my earliest record for a Brimstone.

If the changing seasons brought about by global warming are enticing butterflies out earlier, I feel we ought to consider providing nectar plants for them. Buddleia and Ice Plant do a grand job in late summer but

what do our earlier butterfly visitors feed on?

The Butterfly Conservation group produced a booklet after a five-year survey that listed the 200+ best nectar plants.

I was delighted to discover that in our garden we grow 107 of these most years. Early nectar providers are Aubretia, Forget-me-not, Primrose, Pansy, Lady's Smock,



Comma
Polygonia c-album

Wallflower, Viburnum and Hyacinth. Other plants from the top 30, for later in the year, are Lavender, Michaelmas Daisy, Marjoram, Red Valerian, Hebe, Candytuft, Honesty, Sweet Rocket, Wallflower, Knapweed, Bowles Mauve and Ivy.

Caterpillars have different requirements, usually eating leaves, but only the Large and Small White Butterflies found on cabbage plants create problems for the gardener. Caterpillars of the Peacock, Comma, Red Admiral and Small Tortoiseshell butterflies usually feed on nettles, whilst Speckled Wood, Meadow Brown and Gatekeeper caterpillars feed on grasses.

1998 has been nominated THE YEAR OF BUTTERFLIES AND GARDENS

by Butterfly Conservation

Look out for more information at the Chelsea and Hampton Court Garden Shows and at our own May Fayre.

COMMONERS' CORNER

by Peter Tipton

IN THE PUBLIC question period of the March meeting of the Commons Management Committee, a commoner from Cricket Hill asked why the County Council was pursuing a 'scorched earth policy', chopping down every tree in sight, and generally making the place very unattractive for members of the public. He felt that the public's interest was being subordinated to that of Dartford Warblers. At the same meeting I presented the Society's AGM resolution congratulating the County Site Manager and his Rangers on the excellent job they are doing restoring heathland habitats. I also presented Mike Mann's latest report of voluntary work by Society members, supported by school parties and others. There's even talk of the Gurkas helping. Mike's team had clocked up over 600 'Mann' hours in 1997 which I pointed out is equivalent to about two hours per working day, or a quarter of a Ranger per year. There is obviously a vast difference between the Society's view of what the Common should be like, and what some members of the public want.

This difference in objectives must be explained. It is a little soul destroying for the Society's executive, having mounted a very successful two-year talks and walks programme entitled 'The Heathland on your Doorstep', to find out that we have made very little inroad into the public understanding of what the various authorities, from the Government downwards, are trying to achieve.

It seems, in emphasising the international 'biodiversity' objectives, we have failed to get over the real benefit to those people of Yateley who really could not care less whether Yateley Common provides habitats for three rare species of birds, and countless other 'Red Book' species of other 'bugs and weeds'. The problem is that designation of the Castle Bottom to Yateley Common Site of Special Scientific Interest as part of a proposed Special Protection Area for Wild Birds (the highest accolade in European Union terms) brings with it conflict with human activities. Having spent last Wednesday at the Local Plan Inquiry arguing the Society's case against turning Fox Farm into formal playing fields, against the support for this policy by Yateley Town Council, I can see these conflicts only too clearly. The Society's case was supported formally by English Nature, and additional evidence was provided for us by the County Council, an eminent entomologist and a botanist. I felt like a humble

infantryman being supported by an armoured division, the navy, and air power, all at once.

So if the long-suffering residents of Yateley have to endure 'scorched earth' heathland restoration, all the lovely silver birches cut down, no playing fields on adjacent land, no motorcycle scrambling and no place to dump their rubbish, what are these other real benefits which I maintain come directly from the designation as an SPA?

The answer is that the SPA designation may well protect us from further housing development on the last few fields adjoining the Common. Protection from more housing is not a foregone conclusion. Only the rejection of BCA's third appeal at Fox Farm will finally give us that – making it impossible to build at Cobbetts Lane too. However the converse is almost certainly true; without the protection afforded by the SPA designation new housing at Fox Farm and Cobbetts Lane will be almost impossible for the Local Planning Authority to resist. Unless there is a *volte face* by the Government regarding the projected 4.4 million new households, the likely increased housing allocations for Hart will render our other anti-housing arguments ineffective in contrast with those paraded by the developers. So the SPA is our big hope. Biodiversity, heathland, and rare birds are our big hope to prevent new housing allocations which will 'significantly affect' the Common and threaten its survival as an increasingly rare heathland biotope.

That means that heathland restoration – the 'scorched earth', the chopping down of trees, the control of recreation – must carry on to make the Common a better and better habitat. That does not mean that we cannot enjoy it. The Ramblers Association are fighting for the right to roam on upland moors. We already have that right on Yateley Common. All we have to do is use it sensibly; and enjoy it for what it is. Until very recently, within my own recollection, Yateley Common was mainly open heathland. All we are doing is restoring it to what it was within living memory.

Am I stating a case for no further housing development that nobody else cares about except me? I don't think so. The Society carried out a survey of households in the estates bordering the Common. Eighty-five percent of respondents did not want further housing. The other 15% were not at home so we could not ask them. We found only one person wanting more housing.

But suppose you still want the heathland restoration stopped, you still want to keep the newly-grown trees, you don't care about the rare birds, and you see the Common as a good place to dump your rubbish, what can you do about it? The answer is you cannot do anything. The heathland is protected by European Union Directives. The Government, the County Council, and Hart District Council have a duty to protect lowland heath, particularly those designated or proposed as SPAs. If any government authority takes action to destroy the heath, or even action not to restore it, they are likely to end up in the European Courts. An individual who deliberately kills, disturbs, destroys the eggs of, or damages a breeding site or resting place of a European protected species is liable to summary conviction and to a fine not exceeding level 5. That would rock most people on their heels.

So like it or lump it, heathland is here to stay. It's been here for more than four millenia already and, until the last war, has shaped the character of the villages of Yateley and Darby

Green. In managing the Common we are only trying to remove about 40 years of abuse. Of course we in the Yateley Society have changed our constitution to make it absolutely clear that we value the heathland in its own right. The fact that we may gain protection from further development along our southern edge is a bonus. However, those who do not want development, but who do not want the heathland, cannot have their cake and eat it.

PUBLICATIONS CASE – AN OPPORTUNITY FOR SPEAKERS

THE 1997 ANNUAL Report commented on the talks given by Society members to other organisations, and mentioned the opportunity this gives for sales of Society publications.

The Society's Secretary, Richard Johnston, has assembled a case full of suitable publications for taking to such talks. This

case is available from Richard Johnston for any member who gives a talk to other people – so please make use of it and help to spread our message and boost our finances whenever possible.

Richard may be contacted at 4 Dungells Lane on Yateley 872 832.

A CIRCULATING LIBRARY?

DURING RECENT WINTRY days and evenings a small group of members has been busy tackling the job of searching through a collection of 22 years of the monthly *Hampshire* magazine. They have been noting articles of relevance to the Society. Yateley Library was clearing out the six boxes of magazines and offered them to us. However, as my storage space is also limited it was decided to extract articles that might be of use or interest to members and dispense with the remainder in some way. The task is now well in hand. My grateful thanks to Barbara Garrett, Win

Coltart, Rita Woad, Valerie Kerslake, Pauline Crick, Stephanie Pattenden, Jackie Corral, Lynne Thomson, Maisie Hoare and the two Teds. I can now cut out the chosen articles, list them and add them to Yateley Society History Library.

One of the first articles I came across was about Hampshire Mandrake men. (See 'Notes and Queries' *Newsletters* Nos 67 & 68) Elizabeth pointed out that it is a bit worrying that the library is passing things onto us, as, until now, we have viewed them as a depository for our unwanted items!

MORE OF MR GADD

by Tony Hocking

RUMMAGING THROUGH SOME of the archives donated by Sydney Loader I discovered the following particulars of sale of some of the Gadd property. It shows that W T Gadd was 'a man of substance' in Yateley at the turn of the century. One interesting, if not really

relevant feature is in the heading of the notice; this is the reference to 'Wellington College' station. This was the original name of what became 'Crowthorne' station and reflects the change in relative importance of the college and the growing village.

W. T. GADD, Deceased.

YATELEY, HANTS,

about 1 mile from Sandhurst Halt, $\frac{1}{4}$ from Blackwater and Wellington College Stations and Golf Links, $\frac{1}{4}$ from Camberley, and close to the famous Hartford Bridge Flats.

Particulars & Conditions of Sale OF FREEHOLD & COPYHOLD PROPERTIES

comprising :-

Freehold Cottage and Garden
at CRICKET HILL:

COPYHOLDS—

Detached Dwelling House
on YATELEY GREEN, known as "The Limes," let to Mr. H. Eyles;

Block of 3 Cottages & Gardens
adjoining the last Lot;

Dwelling House and Shop
adjoining the White Lion, in Yateley Village, let to Mr. E. Hudson;

A Piece of Pasture Land
with long frontage, next the Dog & Partridge, let to Messrs.
Gadd & Co.; the whole let at very low rents, producing

£87 16s. PER ANNUM,
which will be sold by Auction by

COTTRELL & BUTLER

at the

White Lion Hotel, Yateley, Hants,
On THURSDAY, JUNE 3rd, 1920,

at THREE o'clock in the afternoon, by direction of the Executors
of the late Mr. W. T. Gadd.

May be viewed by permission of the respective Tenants, and Particulars may be
obtained of Messrs. HOLMES, BALDAM & Co., Solicitors, Littlehampton and Arundel, and
of Messrs. COTTRELL & BUTLER, Surveyors, Valuers and Auctioneers, Wokingham, York-
town, and Reading.

HART LOCAL PLAN TIMETABLE

ATTENDANCE BY MEMBERS will be helpful on all of these dates; remember to sign the Attendance record.

Sessions are usually held in the Council Chamber at Hart District Council's offices in Harlington Way, Fleet. Remember there is no free parking in any of the car parks.

Sessions commence at 9.30am, usually break for one hour's lunch around 1pm, and end between 4.30pm and 5pm. If you plan to attend please phone 873378 a few days before and we

shall give you an estimate of when to attend.

Society evidence is given in about one hour so is easy to miss. the developers usually take all day.

Members of the public can come and go as they please during the sessions, and even 15 minutes spent listening – and signing-in – helps generate the impression that people in Yateley do care about the outcome of this long and often baffling exercise, and support their representatives.

Hearing	Obj ref/Area	Hart Policy	Proofs by	Objection by
13 March	447.15 Yateley C/As	URB 17		YS - evidence given
25 March	447.10 Yat/Ev Gap	CON 25 vii		YS - evidence given
25 March	447.21 Fox Farm	PIC 23		YS - evidence given
28/28 April	Urn Field Moulsham	Omission Site		Alfred McAlpine
30 April	Love Lane Fields	Omission Site		Charles Church
1 May	rear Mayflower Gardens	Omission Site		Charles Church
12 May	Clarks Farm	Omission Site		Linden Homes (Blue Prince Mushroom Farm)
12 May	447.22 Clarks Farm	PIC 24	21 April	YS objection
13/14 May	Cobbetts Lane	Omission Site		Charles Church
11 June	447.12	GEN 1	28 April	YS objection
26 June	Sandhurst Road	Omission Site		Wilkey Property Holdings
9 July	447.01	CON 1 etc	26 May	YS objection
21/22 July	Fox Farm	PIC 23, & Omission		Gouldens/BCA

Yateley Society Programme 1998

APRIL

Thursday 23, Yateley Centre Room D.1.6, 8pm
Talk – An Overview of The History of Yateley
 (From the Ice Age to Today)

Richard Johnston

Richard Johnston will give us the 'History of Yateley' talk which he has prepared and used as one of the instantly available Society talks for outside organisations. It is only right that the Society members should also get the full benefit of Richard's work!

Sunday 26, Meeting point: Wyndhams Pool, 10am
Conservation on the Common

Assisting the Rangers to manage the Common - more volunteers are always needed!
 (Tools and free refreshments are provided.)

MAY

Sunday 17, Meet at Finchampstead Church (Map Ref SU 793 638), 2.30pm
Walk – Finchampstead, Eversley & The Blackwater River

Leader Irene Draper

This will be a circular walk using the new section of the Blackwater Valley Footpath between Longwater Road and the *Tally Ho* public house in Eversley.

Thursday 21, Yateley Centre Room D.1.6, 8pm
Talk – The Protection of Conservation Areas

Henry Caswell

Henry Caswell is an Environmental Services Officer with Hart District Council. He is much concerned with the protection of Conservation Areas from unsuitable development and building styles. He has been giving presentations on this topic to some local councils and has agreed to do so for the Society. This is a topic of great interest to us!

Sunday 31, Meeting point: Wyndhams Pool, 10am
Conservation on the Common

Assisting the Rangers to manage the Common - more volunteers are always needed!
 (Tools and free refreshments are provided.)

JUNE

Thursday 18, Yateley Centre Room D.1.6 at 8pm
Talk – The Tracco and the Nancy Bus

Peter Holmes

Peter Holmes is a transport enthusiast and author of books on the Aldershot & District Traction Company. He will give us an account of some of the local bus companies and services in north east Hampshire prior to the great changes of the recent past.

Sunday 28, Meeting point: Wyndhams Pool, 10am
Conservation on the Common

Assisting the Rangers to manage the Common - more volunteers are always needed!
 (Tools and free refreshments are provided.)

JULY

Sunday 26, Meeting point: Wyndhams Pool, 10am
Conservation on the Common

Assisting the Rangers to manage the Common - more volunteers are always needed!
 (Tools and free refreshments are provided.)

AUGUST

Sun 30, Meeting point: Wyndhams Pool, 10am
Conservation on the Common

Assisting the Rangers to manage the Common - more volunteers are always needed!
 (Tools and free refreshments are provided.)

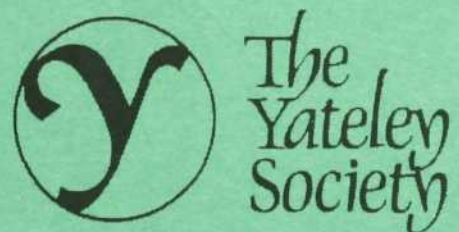


Copy dates:*Newsletter*

1 July 1998

Stop Press

When necessary

**The Yateley Society**

Registered with the Civic Trust

Registered Charity No 282397

Membership Secretary:

Graham Brown

Hartford House, Vicarage Lane, Yateley GU46 7QR

Tel 01252 871934

1998

YATELEY SOCIETY PROGRAMME

v642/18/69/2

APRIL

TALK - 'AN OVERVIEW OF THE HISTORY OF YATELEY (From the Ice Age to Today)' - by Richard Johnston - Thursday April 23rd

Venue: Yateley Centre Room D.1.6 at 8:00pm

Richard Johnston will give us the 'History of Yateley' talk which he has prepared and used as one of the instantly available Society talks for outside organisations. It is only right that the Society members should also get the full benefit of Richard's work!

CONSERVATION ON THE COMMON - Sun April 26th

Meeting point: Wyndhams Pool at 10:00 am

Assisting the Rangers to manage the Common - more volunteers are always needed!
(Tools and free refreshments are provided)

MAY

**TALK - 'THE PROTECTION OF CONSERVATION AREAS' - by Henry Caswell
Thursday May 21st**

Venue: Yateley Centre Room D.1.6 at 8:00pm

Henry Caswell is an Environmental Services Officer with Hart District Council. He is much concerned with the protection of Conservation Areas from unsuitable development and building styles. He has been giving presentations on this topic to some local councils and has agreed to do so for the Society. This is a topic of great interest to us!

CONSERVATION ON THE COMMON - Sun May 31st

Meeting point: Wyndhams Pool at 10:00 am

Assisting the Rangers to manage the Common - more volunteers are always needed!
(Tools and free refreshments are provided)

JUNE

**TALK - 'THE TRACO AND THE NANCY BUS' - by Peter Holmes
Thursday June 18th**

Venue: Yateley Centre Room D.1.6 at 8:00pm

Peter Holmes is a transport enthusiast and author of books on the Aldershot & District Traction Company. He will give us an account of some of the local bus companies and services in north east Hampshire prior to the great changes of the recent past.

CONSERVATION ON THE COMMON - Sun June 28th

Meeting point: Wyndhams Pool at 10:00 am

Assisting the Rangers to manage the Common - more volunteers are always needed!

JULY

CONSERVATION ON THE COMMON - Sun July 26th

Meeting point: Wyndhams Pool at 10:00 am

Assisting the Rangers to manage the Common - more volunteers are always needed!

AUGUST

CONSERVATION ON THE COMMON - Sun August 30th

Meeting point: Wyndhams Pool at 10:00 am

Assisting the Rangers to manage the Common - more volunteers are always needed!

YATELEY SOCIETY PROGRAMME